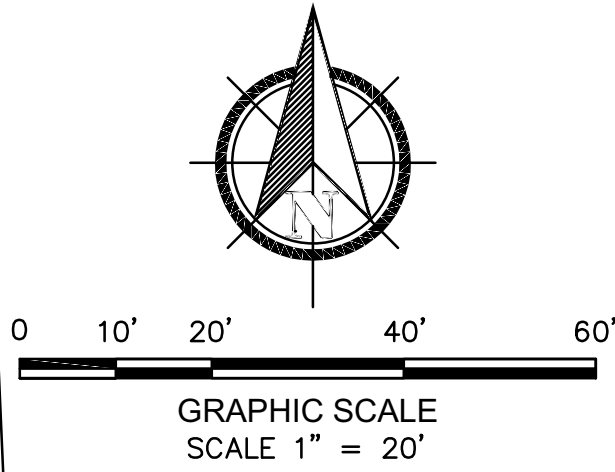


POWER PETROLEUM HQ

A TRACT OF LAND LYING IN GOVERNMENT LOT 4. SECTION 2, TOWNSHIP 49 SOUTH, RANGE 42 EAST,
CITY OF POMPANO, BROWARD COUNTY, FLORIDA

PREPARED BY
PULICE LAND SURVEYORS, INC.
5381 NOB HILL ROAD
SUNRISE, FLORIDA 33351
954-572-1777



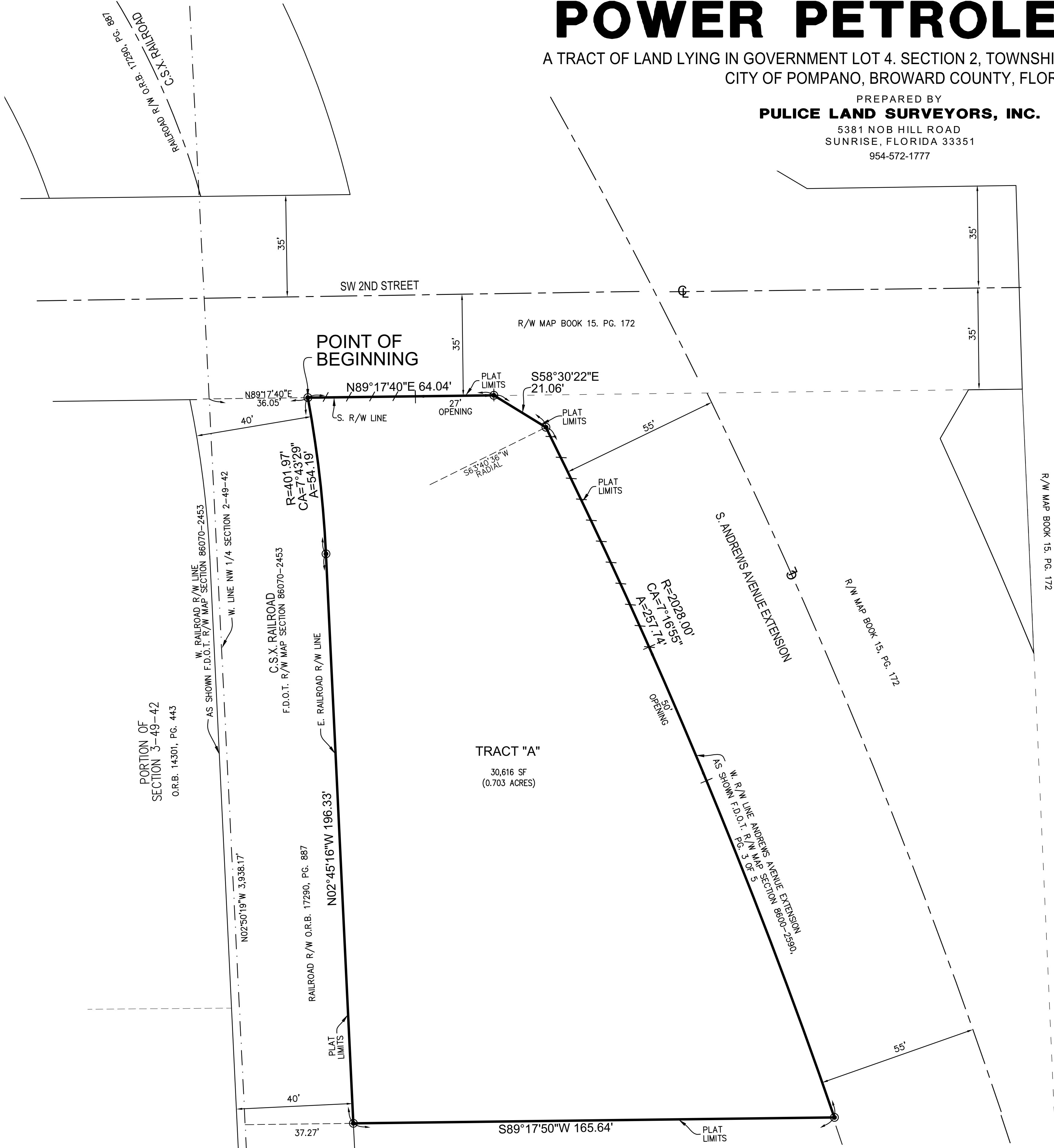
SURVEYOR'S NOTES:

- THIS PLAT IS RESTRICTED TO 9,700 SQUARE FEET OF OFFICE USE AND 2,600 SQUARE FEET OF WAREHOUSE USE.

THIS NOTE IS REQUIRED BY CHAPTER 5, ARTICLE IX, BROWARD COUNTY CODE OF ORDINANCES, AND MAY BE AMENDED BY APPROVAL OF THE BROWARD COUNTY BOARD OF COUNTY COMMISSIONERS. THE NOTATION AND ANY AMENDMENTS THERETO ARE SOLELY INDICATING THE APPROVED DEVELOPMENT LEVEL FOR PROPERTY LOCATED WITHIN THE PLAT AND DO NOT OPERATE AS A RESTRICTION IN FAVOR OF ANY PROPERTY OWNER INCLUDING AN OWNER OR OWNERS OF PROPERTY WITHIN THIS PLAT WHO TOOK TITLE TO THE PROPERTY WITH REFERENCE TO THIS PLAT.
- ANY STRUCTURE WITHIN THIS PLAT MUST COMPLY WITH SECTION 2.1.f., DEVELOPMENT REVIEW REQUIREMENTS, OF THE BROWARD COUNTY LAND USE PLAN, REGARDING HAZARDS TO AIR NAVIGATION.
- BEARINGS ARE BASED ON STATE PLANE COORDINATES AND ARE RELATIVE TO THE NORTH AMERICAN DATUM OF 1983 WITH THE 1990 ADJUSTMENT, FL-E ZONE, WITH THE NORTH LINE OF LOT 4 BEING N89°17'40"E.
- ALL RECORDED DOCUMENTS DEPICTED HEREON ARE RECORDED IN THE PUBLIC RECORDS OF BROWARD COUNTY UNLESS OTHERWISE NOTED.
- NOTICE: THIS PLAT, AS RECORDED IN ITS GRAPHIC FORM, IS THE OFFICIAL DEPICTION OF THE SUBDIVIDED LANDS DESCRIBED HEREIN AND WILL IN NO CIRCUMSTANCES BE SUPPLANTED IN AUTHORITY BY ANY OTHER GRAPHIC OR DIGITAL FORM OF THE PLAT. THERE MAY BE ADDITIONAL RESTRICTIONS THAT ARE NOT RECORDED ON THIS PLAT THAT MAY BE FOUND IN THE PUBLIC RECORDS OF THIS COUNTY.
- THE FOLLOWING NOTE IS REQUIRED BY THE BROWARD COUNTY SURVEYOR PURSUANT TO CHAPTER 177.091, SUBSECTION (28), FLORIDA STATUTES. PLATTED UTILITY EASEMENTS ARE ALSO EASEMENTS FOR THE CONSTRUCTION, INSTALLATION, MAINTENANCE, AND OPERATION OF CABLE TELEVISION SERVICES; PROVIDED, HOWEVER, NO SUCH CONSTRUCTION, INSTALLATION, MAINTENANCE, AND OPERATION OF CABLE TELEVISION SERVICES SHALL INTERFERE WITH THE FACILITIES AND SERVICES OF AN ELECTRIC, TELEPHONE, GAS, OR OTHER PUBLIC UTILITY. IN THE EVENT A CABLE TELEVISION COMPANY DAMAGES THE FACILITIES OF A PUBLIC UTILITY, IT SHALL BE SOLELY RESPONSIBLE FOR THE DAMAGES. THIS NOTE DOES NOT APPLY TO PRIVATE EASEMENTS GRANTED TO OR OBTAINED BY A PARTICULAR ELECTRIC, TELEPHONE, GAS, OR OTHER PUBLIC UTILITY. SUCH CONSTRUCTION, INSTALLATION, MAINTENANCE, AND OPERATION SHALL COMPLY WITH THE NATIONAL ELECTRIC SAFETY CODE AS ADOPTED BY THE FLORIDA PUBLIC SERVICE COMMISSION.
- ALL FACILITIES FOR THE DISTRIBUTION OF ELECTRICITY, TELEPHONE AND CABLE SHALL BE INSTALLED UNDERGROUND.

LEGEND AND ABBREVIATIONS:

- = P.R.M. (SET 4"x4"x24" CONCRETE MONUMENT WITH 2" ALUMINUM DISC STAMPED "PRM LB 3870" UNLESS OTHERWISE NOTED)
- ⊕ = CENTERLINE
- - - - - = NVAL (NON-VEHICULAR ACCESS LINE)
- FDOT = FLORIDA DEPARTMENT OF TRANSPORTATION
- I.D. = IDENTIFICATION
- LB = LICENSED BUSINESS
- O.R.B. = OFFICIAL RECORDS BOOK
- PG. = PAGE
- R/W = RIGHT-OF-WAY
- SF = SQUARE FEET



POINT OF
COMMENCEMENT
WEST 1/4 CORNER OF
SECTION 2-49-42